

 farmcapture

# Traceability tools for farmers

Digital data collection, mapping  
and Rainforest Alliance compliance for farms



Facial  
Recognition



Fingerprint  
Recognition



Mobile  
Money



IoT | MDM





## farmcapture

**farmcapture™ is a farmer based application for collecting farmers information as well as farm details, input distribution and agricultural output.**

farmcapture™ allows farms, farmer groups and supply chain organizations that meet all applicable requirements of the Sustainable Agriculture Standard and comply with the process requirements of the Rainforest Alliance Assurance Rules to sell, ship and/or buy their product as Rainforest Alliance Certified

The app consists of different modules for digitizing farmer agreements, farm inspection and farm mapping which includes GPS.



Farmer Profile



Farm Mapping



Farm Inspection



Input Distribution



Stock Management



Plant Population



Farmer Feedback



Coaching & Training

### 1. Farmer profiling

The app allows an organization to collect individual or group bio data in accordance to Rainforest alliance requirements.

### 2. Farm mapping

The app allows users to take individual/group GPS coordinates using Google maps. Field inspectors are given provision to capture farm geolocation by picking land edges points on the map digitally and attached to specific land number.

### 3. Farmer Production

The app provide producers with a framework to accurately and credibly record the quantities of certified production within their operations, their segregation from non-certified products, sales transactions, conversion methods, and trademark use.

### 4. Input Distribution

The app allows an organization to manage stocks and ensure the intended farmers receive the inputs.

### 5. Coaching and training

Farm inspectors can conduct training using the app.

### 6. Rainforest Alliance Checklist

The system allows confirmation of data as per the stipulated requirements which include management of farms, traceability and social requirements. By use of the polygon coordinates the system generates KML files to be uploaded on the RA portal for certification.





Image Source: Mbogo Tea Factory



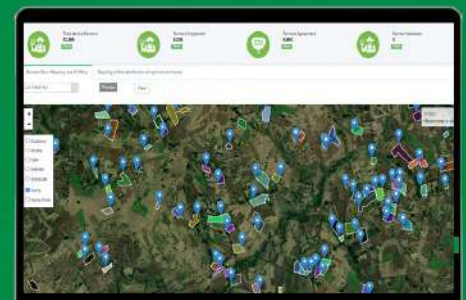
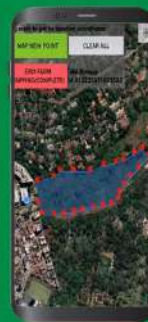
## Case Study

# Mbogo Tea Factory

Mbogo Valley Tea Factory is a licensed Black Tea Manufacturer, Packer and Exporter in Kenya. They have an extensive knowledge and experience in tea production, manufacturing and Tea trade both locally and internationally. This serves as a guarantee of production of high quality.



Mbogo Tea Factory currently works with over 10,000 farmers, and is a 5-Star tea exporter



**farmcapture™** is used to conduct a Rainforest Alliance audit. This is an add-on to weightcapture solution used for years with the clients.

The RA checklist and requirements have been designed in the application to suite the sustainable Agricultural standard farm requirements. All these have to be done by a trained inspector. This inspection as well has to be signed by the farmer.

The backend displays all the data capture from the mobile app and allows user to hover on the maps per route. It also generates various reports which includes inspection summary, inspector's performance, farmers register and can be customized further according to user requirements. It also allows for definition of Inspection cycles and preview of farmer checklists by extension officers.



*Tet Teas*



**Firestone**

## Contact Us

### Europe

info@capturesolutions.com

Tel: +44 20 8144 2209

### East Africa

ea@capturesolutions.com

Tel: +254 702 637 850

### Ivory Coast

ci@capturesolutions.com

Tel: +225 591 649 09

### Nigeria

ng@capturesolutions.com

Tel: +234 817 977 5237

## Other Modules

 **weightcapture**

 **secucapture**

 **logcapture**

 **medicapture**

 **timecapture**

 **idcapture**