

A close-up photograph of a person's hand holding a yellow cacao pod on a tree branch. The pod is ripe and has a textured, bumpy surface. The background shows lush green foliage and other branches of the tree.

agricapture

Taking the agro out of agricultural supply chains

We are ensuring a better future

Through genuine traceability and verification tools.

Capture Solutions provides reliable digital verification and traceability tools to ensure fairer, more ethical supply chains, and streamlined efficient operations. Our solutions bring transparency and accuracy to supply chains, ensure that farmers are paid fairly and quickly, and that produce is traceable from source to shelf. Our mission is to ensure a better future and a fairer share for all. We work globally, helping people in remote parts of the world access technology that helps improve their lives and livelihoods.



Total transparency from farming to finance

Verification and traceability solutions to ensure transparency and accuracy in agricultural supply chains.

Agricultural supply chains are invariably based upon the sale and purchase of weighed goods. Too often, the weight capture process is vulnerable to pilferage, exploitation and dishonest dealing, particularly in rural locations. To date, because of the analogue nature of these processes, it has been almost impossible to track produce accurately and transparently, ensure ethical standards are upheld, that farmers are paid fairly and that produce is not tampered with.

AgriCapture is our family of solutions that accurately weigh and digitally log agricultural produce through the value chain, eradicating tampering and shrinkage, using biometric data to deliver full transparency and traceability to the farmer level. With low-cost services, and robust accessible technology, we serve the most remote parts of Africa, delivering total transparency in the supply chain, from seed to shelf and better lives and livelihoods for small holder farmers.





Digital weight tracking solution,
for the accurate management and
processing of weighed goods.

weightcapture™

WeightCapture™ ensures that the processing of raw goods is fully traceable and accurate. This means ethical standards can be upheld, farmers can be paid fairly, and consumers know exactly where their food is from.

Agricultural supply chains are invariably based upon the sale and purchase of weighed goods. Too often, the weight capture process is vulnerable to pilferage, exploitation and dishonest dealing, particularly in rural locations. The analogue nature of these processes allows for inaccurate logging of quantities, purposeful 'under' weighing and an inability to accurately trace the source of produce. WeightCapture is a digital solution that uses biometric, bluetooth and

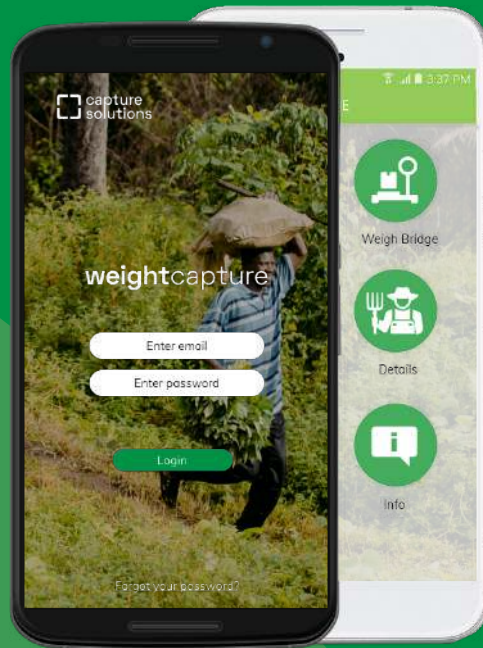
cloud technology to deliver full verification in the management and processing of goods; eradicating tampering and corruption, and ensuring total transparency in the supply chain, from seed to shelf.

This unique system provides confidence of ethical supply to farmers, co-operatives, companies, NGOs and consumers.

WeightCapture™ collects weight data using a Bluetooth-enabled scale and sends it real-time, exchanging information with the warehouse so that the product collected can be processed.

WeightCapture™ Set includes

- WeightCapture™ Scale to customer's specification
- Bluetooth Connector between Scale & Smartphone
- Rugged Android Smartphone (with Laser Barcode Scanner)
- Bluetooth Printer
- Barcode Tags
- Fingerprint Recognition (optional)
- WeightCapture™ Mobile App
- WeightCapture™ Server App
- WeightCapture™ Weighbridge Module
- WeightCapture™ Trade
- Training for the operators
- Hosting and Reporting
- Mobile Payments and Advances with CapAgri™
- Email, chat, phone and remote assistance support (including backup)



Capture Solutions simple five-step process to fully traceable supply chains.



1. Sync hardware
Turn on and sync the rugged Android mobile, WeightCapture™ digital scales, bluetooth printer and fingerprint scanner.



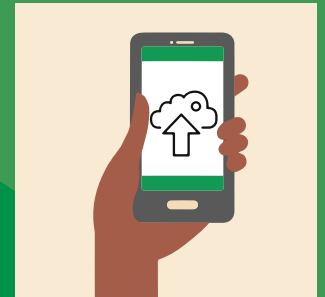
2. Confirm Identity
Use the Android Mobile and fingerprint scanner to identify yourself and the digital scales will wirelessly sync to the mobile.



3. Weigh & tag goods
Weigh goods on the digital scale, attach and scan the barcoded tag. Press capture weight to confirm.



4. Print
A ticket will be printed via the bluetooth printer confirming the transaction for the farmer to take for his records.



5. Sync to server
The Android PDA syncs to the Server as soon as there is internet available. The connection is both ways and is asynchronous allowing the system to work independently for a number of hours without the need to sync.

capagri™

CapAgri™ is a revolutionary payment solution enabling farmers to gain access to immediate payments and advanced, affordable finance options, supported by their production and delivery data.

CapAgri™ is a mobile payment solution that complements the WeightCapture™ solution, providing secure, digital/mobile money payments through the full value chain.

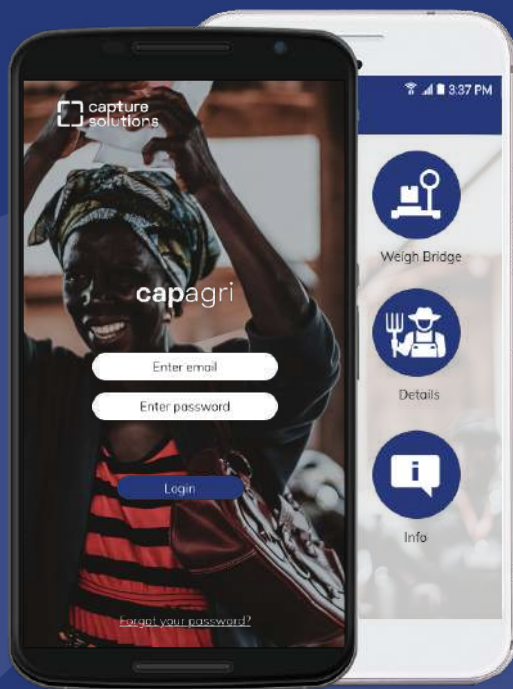
CapAgri™ is integrated with WeightCapture™ and uses biometric, mobile and cloud technology – delivering fast, secure, verified payment, eliminating corruption, theft or mispayment. It benefits farmers directly by offering them

immediate payments on yield, as well as affordable advances, and ensures that those who are most vulnerable are not subject to theft, loan sharks or unaffordable borrowing.

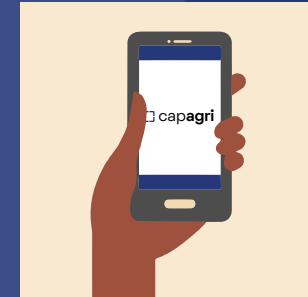


Finance options for farmers, providing secure, immediate or advanced payments, access to fertilisers and other services.

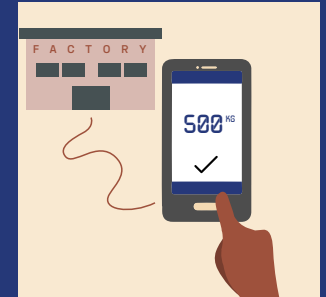
CapAgri™ uses the collected weight data from our WeightCapture™ solution to accurately process immediate payments for farmers, rather than them having to wait for payment from accounts payable.



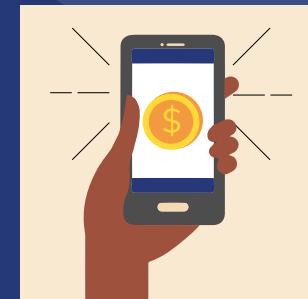
Capture Solutions four simple steps to immediate and accessible finance.



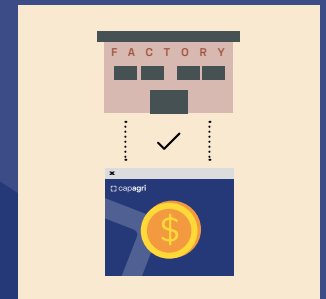
1. Sign in
Farmer signs in to the CapAgri™ App to apply for advance based on produce supplied to the Processor / Co-op but not yet paid for.



2. Verify data
The CapAgri™ App verifies produce supplied with the WeightCapture™ App to support the application for credit.



3. Approve & disburse payment
An SMS approval is sent to the farmer and payment is made via the CapAgri™ App to a mobile money account.



4. Loan is settled
At the end of the loan term, the advance loan is settled directly between CapAgri™ and the Processor / Co-op.

N.B. In some countries, such as Ivory Coast the process is different, but similar, due to local requirements.

Our quality control solutions can be used in isolation or as a bolt-on to any of our solutions to give added peace of mind and transparency by verifying critical quality control checks in the goods supply chain.



lactocapture™

A solution to verify critical quality control in the dairy supply chain, using bluetooth and optional biometrics, to verify location and time of lacto analysis.



livestockcapture™

A solution to accurately track the management and reporting of livestock inventories, from bio data to health & medical information.



moisturecapture™

A solution to verify critical quality control in the goods supply chain, using bluetooth and optional biometrics, to verify location and time of moisture analysis.

Contact us now to
book a demo or to
discuss your needs.

Contact info@capturesolutions.com
for general enquiries or

East Africa

ea@capturesolutions.com
Tel: +254/702637850

Nigeria

ng@capturesolutions.com
Tel: +2348179775237

Ivory Coast

ci@capturesolutions.com
Tel: +225 59 16 49 09

